

SUPER BUILT-UP AREA
 FLAT- A = 1544 SQ.FT.
 FLAT- B = 1229 SQ.FT.

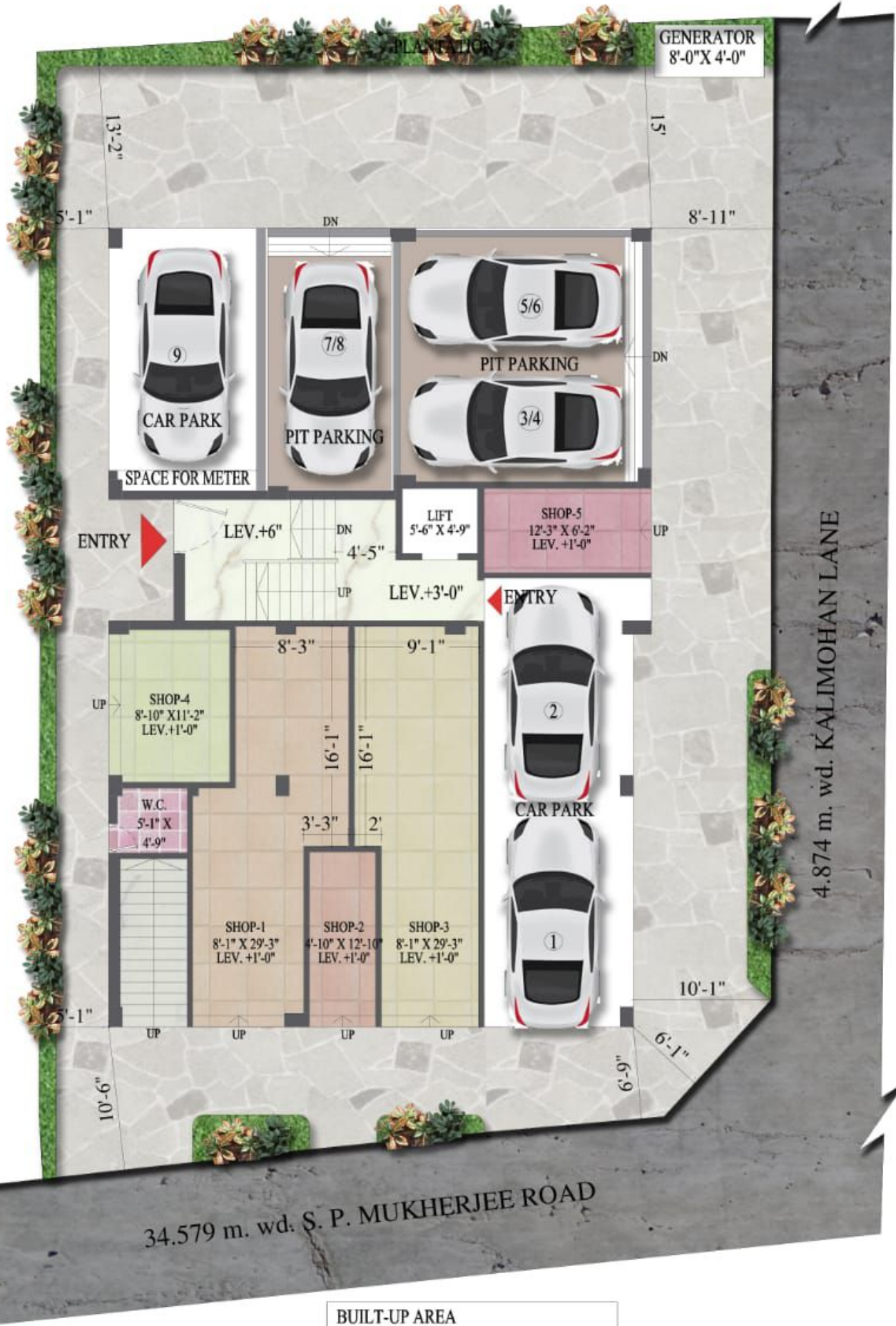
TYPICAL FLOOR PLAN
 (2ND TO 4TH FLOOR)

PROPOSED G + V STORED RESIDENTIAL BUILDING AT
 PREMISES NO. 13, SHYAMA PRASAD MUKHERJEE ROAD, KOLKATA.

DATE: 19.04.2022

SCALE: FIT TO





BUILT-UP AREA	
SHOP-1 = 274 sq.ft.	SHOP-4 = 110 sq.ft.
SHOP-2 = 68 sq.ft.	SHOP-5 = 90 sq.ft.
SHOP-3 = 264 sq.ft.	

GROUND FLOOR PLAN

PROPOSED G+IV STORIED RESIDENTIAL BUILDING AT PREMISES NO. 13, SHYAMA PRASAD MUKHERJEE ROAD, KOLKATA.

DATE: 19.04.2022

SCALE: FIT TO



Anjan Ukil
architect